



PRESENTING SPONSOR



# FUTURE JOBS



Building the Future



**OPPORTUNITIES IN CONSTRUCTION**

## Student Resource Packet

Considering career choices, or looking to get reskilled in the new economy? Join Lynne Hayes-Freeland for WQED Future Jobs: Building the Future. Hear directly from union leaders, construction industry professionals on high demand opportunities in the building trades. Learn what it takes to find rewarding employment in the construction industry which is projected to grow by 6.9% over the decade.



### Event Day Questions

1. If someone attending today is interested in construction, but not sure which type of job is best suited for them, do you have any tips for how they can learn more about the different types of jobs we are discussing today?
2. What is the job security like in the construction field?
3. What are opportunities for advancement? Do some people go to college to get degrees to advance their careers after they start working in this field?
4. What is the construction field like for women and minorities?
5. What is your number one tip for getting accepted into a union apprenticeship program?
6. Is the Pittsburgh market poised for growth in the construction field?
7. What do you look for in a potential candidate interested in the construction industry?

## Career Exploration Questions

1. Where can you go to learn more about the different types of jobs we are discussing today?
2. In regards to the different types of fields and jobs we discussed today, was there anything surprising or new that you learned about? Did any of the career fields sound like something you would be interested in going into? Why or why not?
3. What are some biases someone might have about these fields?
4. How would you define job security? What factors contribute to job security? How would you find out about these factors in regards to the field that you're interested in pursuing?
5. What are opportunities for advancement? Do some people get college degrees to advance their careers after they start working in this field?
6. What does the diversity of the field look like?
7. What are the steps for applying to a union apprenticeship program? What are the benefits of being a part of a union apprenticeship program?
8. In Pittsburgh, which industries are poised for growth?



## **Builders Guild of Western Pennsylvania**

**The Builders Guild of Western Pennsylvania is a unique labor/management initiative of the building and construction trade unions of Western PA and local professional contractor associations.**

**Our mission is to promote quality construction, provide a forum for labor and management to work together on issues of common concern, and to create career opportunities for men and women interested in working in the demanding and challenging construction industry. The Builders Guild is an advocate for the commercial construction industry throughout Western Pennsylvania and beyond.**

**The Builders Guild of Western Pennsylvania  
631 Iron City Drive • Pittsburgh, PA 15205  
Phone: (412) 921-9000  
[www.buildersguild.org](http://www.buildersguild.org)**



**Visit the Builders Guild of Western PA website at [buildersguild.org](http://buildersguild.org) to learn about these apprentice programs:**

- Boilermaker
- Bricklayer
- Cement Mason
- Commercial Carpenter
- Drywall Finisher
- Electrician
- Elevator Constructor
- Floor Coverer
- Heavy Highway Carpenter
- Glazier
- Insulator
- Ironworker
- Laborer
- Mill Cabinet Worker
- Millwright
- Operating Engineer
- Painter
- Pile Driver
- Plasterer
- Plumber
- Roofer
- Sheet Metal Worker
- Sprinkler Fitter
- Steamfitter



## Union Apprenticeships

### Union Apprenticeship Application, Testing Periods, and First Year Rates

(Application and testing information is subject to change. Please call the individual trade to verify information)

Apprenticeship / Contact Information	Application Period - Testing Period - Classes Start	Application Fee	First Year Apprentice Hourly Wage** + Benefits
OPERATING ENGINEERS (Heavy Equipment Operators) 724-668-2244 • <a href="http://www.wpaoperators.org">www.wpaoperators.org</a>	Mid-December ( <i>please check website for details</i> )	\$25	\$20.00 to \$24.00
OPERATIVE PLASTERERS 412-761-6310 • <a href="http://www.opcmia526.org">www.opcmia526.org</a>	Applications Year Round Classes Start in January	\$10	\$14.89
CEMENT MASONS 412-761-6310 • <a href="http://www.opcmia526.org">www.opcmia526.org</a>	April	\$10	\$18.76 Building Trades \$15.97 Heavy Highway
PAINTERS 412-276-5758 • <a href="http://www.ftiofwpa.com">www.ftiofwpa.com</a>	Year Round • Call First 8:00 AM - 2:00 PM	No Fee	\$14.25 Commercial \$19.89 Industrial \$21.15 Bridges - Towers
GLAZIERS	Year Round • Call First 8:00 AM - 2:00 PM	No Fee	\$15.25
DRYWALL FINISHERS	Year Round • Call First 8:00 AM - 2:00 PM	No Fee	\$14.55
PLUMBERS LOCAL #27 724-695-9047 • <a href="http://www.ua27.org">www.ua27.org</a>	February to March	\$30	\$19.13
PLUMBERS & PIPEFITTERS LOCAL #354 724-925-8108 • <a href="http://www.lu354.com">www.lu354.com</a>	3rd Monday of Every Month 8:00 AM - Noon	\$40	\$14.33
Residents of Westmoreland, Fayette, and portions of Washington and Greene counties should apply in person at Youngwood JATC, 263 Armbrust Rd, Youngwood. Residents of Bedford, Blair, Cambria, Cameron, Clearfield, Elk, Huntingdon, Indiana, Jefferson and Somerset counties should apply at Ebensburg JATC, 172 Municipal Rd, Ebensburg.			
ROOFERS 412-732-9720 • <a href="http://www.rooferslocal37.com">www.rooferslocal37.com</a>	Applications Year Round Classes Start as Needed	No Fee	\$15.26/hour increasing to \$20.91 after 600 hour probationary period

SHEETMETAL WORKERS 412-828-1386 • <a href="http://www.smlocal12.org">www.smlocal12.org</a>	January Through February	No Fee	\$21.61 + benefits
SPRINKLER FITTERS 412-822-8040 • <a href="http://www.sprinklerfitters542.org">www.sprinklerfitters542.org</a>	Applications Annually in April, Testing in July	\$25	\$15.27
STEAMFITTERS 412-481-0333 • <a href="http://www.ua449.com">www.ua449.com</a>	Applications Annually in June	\$50	\$17.78 North of I-80 \$18.68 South of I-80
BOILERMAKERS 412-343-3072 • <a href="http://www.boilermakerslocal154.com">www.boilermakerslocal154.com</a>	3rd Tuesday Monthly • 9:00 AM - 12:00 PM Year Round	No Fee	\$28.05
BRICKLAYERS 412-825-0923 • <a href="http://www.local9pa.com">www.local9pa.com</a>	Applications Year Round • Classes Start as Needed	\$25	\$14.30 to \$18.04
TILE SETTER / FINISHER	Applications Year Round • Classes Start as Needed	\$25	\$13.00 to \$15.96
TERRAZO FLOOR INSTALLER / FINISHER	Applications Year Round • Classes Start as Needed	\$25	\$15.90 to \$16.19
POINTER / CAULKER / CLEANER	Applications Year Round • Classes Start as Needed	\$25	\$15.97
STONE MASON	Applications Year Round • Classes Start as Needed	\$25	\$18.68
CARPENTERS 412-262-1830 • <a href="http://www.kmltf.org">www.kmltf.org</a>	Online 24/7 at <a href="http://www.eascarpenters.org">www.eascarpenters.org</a> Wednesdays • 8:00 AM to 3:30 PM	No Fee	\$14.49 to \$24.67 - Rates Vary by Trades Listed Below
COMMERCIAL CARPENTERS	Currently not accepting applications	No Fee	\$18.56
HEAVY HIGHWAY CARPENTERS	June and As Needed	No Fee	\$22.05
FLOOR COVERERS	June and As Needed	No Fee	\$18.56
MILL CABINET WORKERS	June and As Needed	No Fee	\$14.49
PILE DRIVERS	June and As Needed	No Fee	\$20.58
MILLWRIGHTS	June and As Needed	No Fee	\$24.67
ELECTRICIANS IBEW LOCAL #5 412-432-1145 • <a href="http://www.ibewlocal5jafc.org">www.ibewlocal5jafc.org</a>	If interested in applying please call to verify exact application and testing dates and times."	\$25	\$15.38
ELECTRICIANS IBEW LOCAL #712 Beaver, Lawrence, Mercer & Crawford Counties 724-775-6920 • <a href="http://www.wcpacjafc.org">www.wcpacjafc.org</a>	Applications on Tuesday, Wednesday, and Thursday, 9:00 AM - 2:30 PM, or by Appointment	\$25	\$16.72

ELEVATOR CONSTRUCTORS 412-341-6666 • <a href="http://www.iuec.org">www.iuec.org</a>	Year Round Call For An Appointment	\$25	\$20.00
INSULATORS 724-788-1913 • <a href="http://www.insulators2.org">www.insulators2.org</a>	As Needed	\$25	\$19.08
IRON WORKERS 412-471-4535 • <a href="http://www.apprentice.iwlocal3.com">www.apprentice.iwlocal3.com</a>	Year Round Testing as Needed	\$35	\$20.00
LABORERS 800-442-8868 • <a href="http://www.laborpa.org">www.laborpa.org</a>	Dates Announced Annually Visit Laborers Website	\$25	\$18.00 to \$20.90
<p>* If you are interested in applying please call the listed number to verify exact application and testing dates and times. ** This represents the hourly pay and does not include health and benefit package. Hourly rate varies by craft within these training programs. The disclosed rates were accurate at the time of printing. Collective bargaining agreements reached after publication may result in a higher starting wage rate than what is listed here. *** Carpenters do not require a driver's license to apply; must have valid government photo ID.</p>			



## Western Pennsylvania Laborers Training Center

The Western Pennsylvania Laborers Training Center is a first-class facility with the expertise to train Laborers in all the current craft skills. This training provides our signatory contractors with a competitive edge. The training staff is qualified to provide cutting edge technological skills to every apprentice and journey worker. Currently, there are 45 courses offered, covering such topics as: concrete, asbestos, scaffold building, blueprint reading, ICRA, and First Aid/CPR/AED. (Full Course Listing) All current members and active apprentices are strongly encouraged to utilize this valuable resource to better prepare themselves for future employment.

Laborers are involved with most phases of a construction project, including building highways and maintaining infrastructure. Do you want to know if this exciting and challenging career path is a good fit for you? Find out by visiting [www.futureroadbuilders.com](http://www.futureroadbuilders.com) and take part in a free, half hour online virtual project where you will obtain industry awareness, a sampling of test questions, and a certificate upon completion of the program.

Western Pennsylvania Laborers' Training Center  
317 Deer Creek Road, Saxonburg, PA 16056  
Phone: (724) 352-2224  
[www.laborpa.org/](http://www.laborpa.org/)







# OPPORTUNITY

**THE UNION WAY OF LIFE PROVIDES GREAT  
WAGES, EXCELLENT PENSION AND HEALTHCARE  
BENEFITS, AND FREE TRAINING!**

*is Knocking*

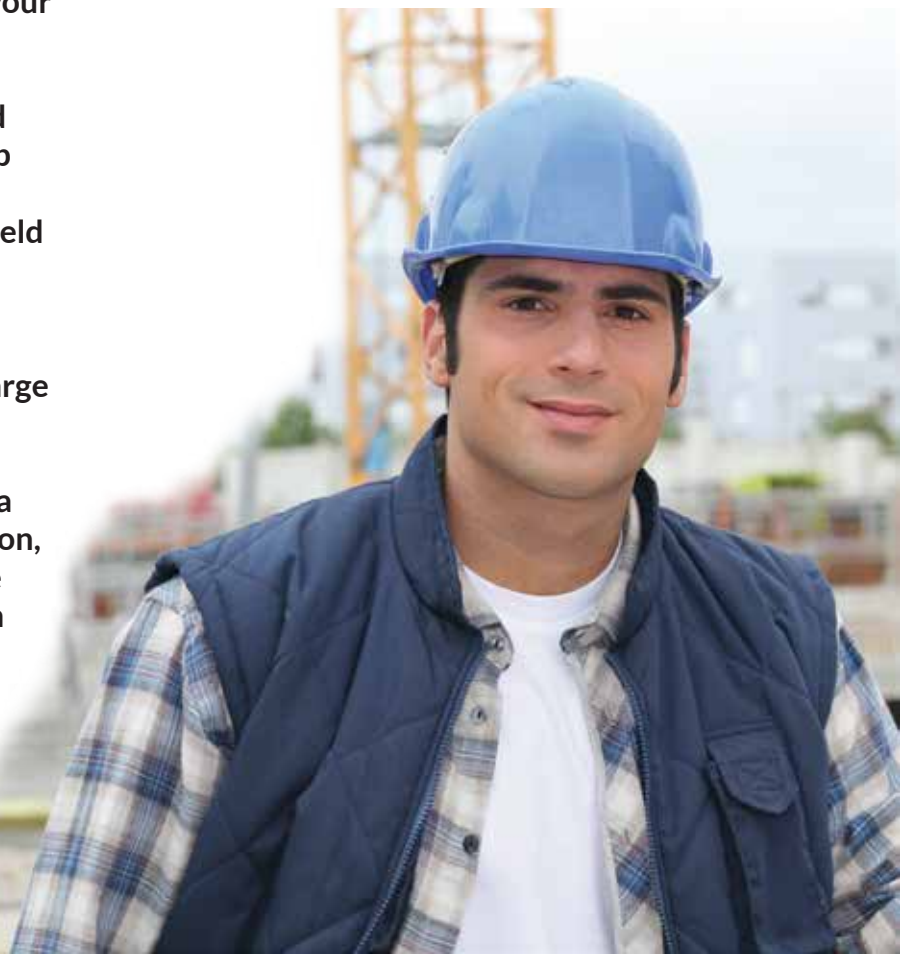
A career with the Laborer's Union provides the opportunity to earn a livelihood for yourself and your family.

Many young people go to school, get a degree, and are tens of thousands of dollars in debt with no job guarantee after they complete their education. Many college graduates do not even work in the field in which they've earned their degree.

When you are a union member, all the skills and training that are required are provided free of charge at our training facility in Saxonburg.

If you want to work hard, are drug-free, and have a valid PA driver's license with reliable transportation, you are eligible to become a member of one of the locals of the Laborers' District Council of Western Pennsylvania.

For more information, please call the Laborers' Training Center or visit their website at [laborpa.org/training-center](http://laborpa.org/training-center).





## Carpenters' Training Center

The apprenticeship program at the KML Carpenters' Training Center offers a four-year tuition free program in 6 different skilled crafts, Commercial Carpentry, Floor Covering, Pile Driver/Dock Builder, Heavy Highway Construction, Millwright and Cabinetmaker/Millworker. Apprentices are trained in a combination of classroom/workshop and on-the-job training. While completing the classroom/workshop training at the Training Center apprentices are learning valuable skill sets that put them on the cutting edge of the construction industry while also earning college credits towards an associate degree in carpentry. While completing the on-the-job training apprentices are earning a competitive wage along with benefits that allow them to prepare for their future. We have 3 Training Centers through the state of Pennsylvania. Please contact your local Training Center for more information. [www.kmltf.org](http://www.kmltf.org)

### Apprenticeship Program FAQ

[t.ly/ewQu](https://t.ly/ewQu)



Duncansville Training Center  
261 Patchway Road  
Duncansville, PA 16635  
814-693-0311  
[duncjac@kmlctf.org](mailto:duncjac@kmlctf.org)

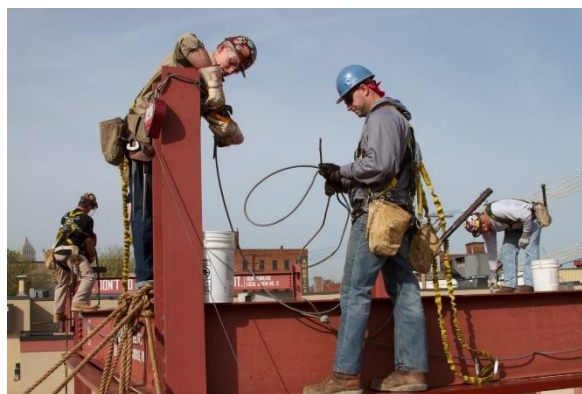
Lebanon Training Center  
1718 Heilmandale Road  
Lebanon, PA 17046  
717-273-5277  
[lebjac@kmlctf.org](mailto:lebjac@kmlctf.org)

Pittsburgh Training Center  
652 Ridge Road  
Pittsburgh, PA 15205  
412-262-1830  
[jac@kmlctf.org](mailto:jac@kmlctf.org)

# Iron Workers<sup>TM</sup>

## LOCAL UNION NO. 3

In Clearfield, Erie, and Western PA there are over 2,000 Iron Workers specializing in the following craft sectors: structural steel erection, pre-cast concrete construction, bridge erection and repair, ornamental iron/curtain wall, concrete/reinforcing steel, pre-engineered metal buildings, welding, rigging/machinery moving, post tensioning, industrial construction, industrial plant maintenance, and wind turbine construction.



Taking pride in their craft and performance has resulted in the building of some of the most recognizable buildings, sports arenas, bridges, stadiums, monuments, and hospitals in the area and across the country. As you plan and prepare for your next construction project, recruit the highly skilled, best-trained, and safety-conscious team of craftsmen in the industry – Iron Workers Local Union No. 3

About Local #3's Apprenticeship Program  
[tinyurl.com/yk6kwczx](http://tinyurl.com/yk6kwczx)



### **Apprenticeship & Training Center**

2315 Liberty Avenue  
Pittsburgh, PA 15222  
(412) 471-4535 or TOLL FREE: (877)  
771-4535  
FAX (412) 471-4536

### **Iron Workers Local Union No. 3**

2201 Liberty Avenue  
Pittsburgh, PA 15222  
Phone: 412-227-6767  
[nfo@iwlocal3.com](mailto:nfo@iwlocal3.com)  
<https://iwlocal3.com/>



## IBEW Local #5 Professional Electricians

The International Brotherhood of Electrical Workers (IBEW) represents Brothers and Sisters who are roughly 750,000 strong. These active members and retirees work in a wide variety of fields including utilities, construction, telecommunications, broadcasting, manufacturing, railroads and government.

The IBEW has members in both the United States and Canada and stands out among the American unions in the AFL-CIO because it is among the largest and has members in so many skilled occupations.

As union members, we bargain collectively with our employers over wages, benefits, and rights.

The training program for our electricians features an award-winning, five-year comprehensive training that includes more than 900 hours of classroom study in electrical theory and project safety, along with 8,000 hours of on-the-job training with experienced electricians.

IBEW Local Union #5  
5 Hot Metal Street  
Pittsburgh, PA 15203  
Phone: +1 412.432.1400  
Fax: +1 412.432.1499

[www.ibew5.org](http://www.ibew5.org)





## JOINT APPRENTICESHIP COMMITTEE

Local Union No. 5, I.B.E.W., and Western PA Chapter, N.E.C.A.

5 Hot Metal Street, Suite 100, Pittsburgh, PA 15203-2356

[www.ibewlocal5jafc.org](http://www.ibewlocal5jafc.org)

[www.ConstructYourFuture.com](http://www.ConstructYourFuture.com)

**APPRENTICESHIP** opportunities for those who meet the requirements are hereby announced by the Joint Apprenticeship and Training Committee of the I.B.E.W. Local Union #5 and the Western PA Chapter of N.E.C.A.

Applications will be distributed at the:

Electrical Training Center – 5 Hot Metal Street, Suite 100, Pittsburgh, PA 15203-2356 (South Side)

**May 11th, 12th, 13th, 14th and 15th - from 9:00 AM to 1:00 PM**

**May 18th, 19th, 20th, 21st and 22nd - from 9:00 AM to 1:00 PM**

### **APPLICATIONS WILL ONLY BE GIVEN IN THE PITTSBURGH OFFICE**

**ALL APPLICATIONS MUST BE PICKED UP IN PERSON BY THE APPLICANT AND COMPLETED AT THAT TIME. APPLICANTS MUST MEET THE FOLLOWING REQUIREMENTS:**

- A. Applicants shall be in good health, of average intelligence, conscientious and interested in learning the trade.
- B. Must be 18 years old, as of **June 30, 2021**.
- C. Must be a high school graduate or hold a GED.
- D. Must have completed one year of high school algebra or one post high school algebra course.
- E. Applicant must be willing to take any tests given by or from the Committee.
- F. When an apprenticeship is offered, one must submit to a physical and substance testing and a test for color blindness. These tests will be administered by a doctor selected and paid for by the Committee.
- G. Must be a resident of one of the following counties in Pennsylvania for a least one year prior to application: Allegheny; Armstrong; Bedford; Blair; Butler; Cambria; Cameron; Centre; Clarion; Clearfield; Elk; Fayette; Fulton; Greene; Huntingdon; Indiana; Jefferson; McKean; Somerset; Venango; Washington and Westmoreland.
- H. A non-refundable check or money order for \$25.00 (Twenty-Five Dollars) will be required with the returned application. Cost of all testing and examination to be paid by the Committee. **We will not accept cash payments; check or money orders only.**
- I. All applicants must have a valid Pennsylvania Driver's License for the entire time they are in the apprenticeship program.
- J. The recruitment, selection, employment and training of apprentices during their apprenticeship shall be without discrimination due to race, color, religion, national origin, sex, or non-job related disabilities. The sponsor shall take affirmative action to provide equal opportunity in the apprenticeship and will operate the apprenticeship program as required under Title 29 or the Code of Federal Regulations, Part 30 and the Equal Employment Opportunity Regulations of the Commonwealth of Pennsylvania.

### **PLEASE BRING THE FOLLOWING ITEMS WITH YOU:**

- 1. Copy of your High School transcript/Official or Unofficial (**not the diploma**) or your GED with scores (**not a copy of the certificate**) and High School transcript for years attended.
- 2. Your Driver's License.
- 3. A (non-refundable) check or money order only for \$25.00 made payable to Joint Apprenticeship Training Committee. **We will not accept cash payments; check or money orders only.**



## Turner Construction Co.

Turner is a North America-based, international construction services company and is a leading builder in diverse market segments. The company has earned recognition for undertaking large, complex projects, fostering innovation, embracing emerging technologies, and making a difference for their clients, employees and community.

With a staff of 10,000 employees, the company completes \$12 billion of construction on 1,500 projects each year. Turner offers clients the accessibility and support of a local firm with the stability and resources of a multi-national organization.

Our people bring their technical knowledge, experience, and resourcefulness to the delivery of our construction services. As the largest general contractor in the country, Turner is a leader in all major market segments, including healthcare, education, commercial, sports, aviation, pharmaceutical, retail and green building. Driven by a commitment to continuous improvement, Turner embraces Building Information Modeling and lean construction methods to improve efficiency and enhance client value.

### **SPECIALIZATIONS**

- Aviation / Transportation
- Commercial
- Cultural & Entertainment
- Data Center
- Education
- Government
- Green Building
- Healthcare
- Infrastructure

- Interiors
- Industrial / Manufacturing
- Pharmaceutical
- Public Assembly
- Religious
- Research & Development
- Residential / Hotel
- Retail & Restaurant
- Sports

### **SERVICES**

- Design+Build
- Turner Logistics: Procurement Services
- Medical Planning and Procurement
- Building Information Modeling (BIM)
- Lean Construction



Pittsburgh Office  
925 Liberty Avenue, 3rd Floor  
Pittsburgh, PA 15222  
Phone: (412) 255-5400

[www.turnerconstruction.com](http://www.turnerconstruction.com)



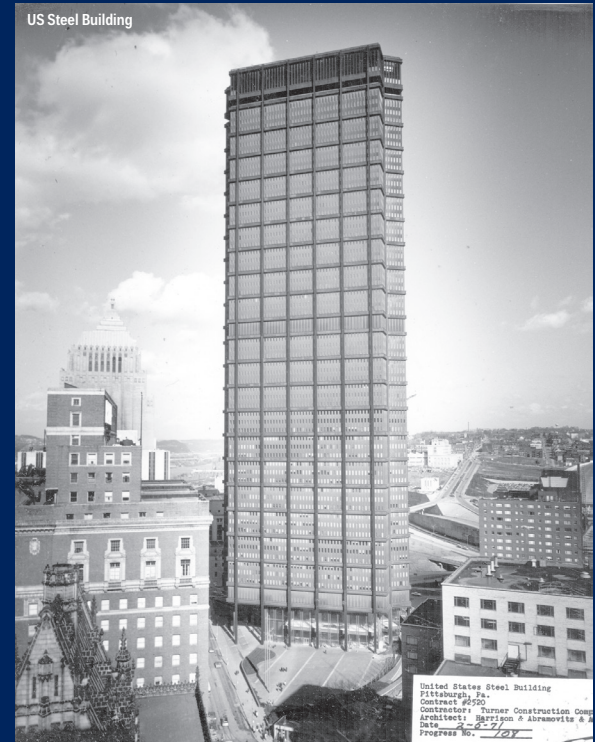
Turner Construction Company's roots in Western Pennsylvania date back to 1908 with a contract for work on Forbes Field, which served as the original home of the Pittsburgh Pirates Baseball Club and the Pittsburgh Steelers. In 1912 we built the National Biscuit Company's (NABISCO's) new plant in East Liberty and over the following decades we built many of the prominent buildings in Pittsburgh, including the 64-story US Steel Tower, which is still the tallest building in the city. Turner opened a full-services Pittsburgh office in 1976 and, since then, we have grown to a staff of 70 who work on projects across Western Pennsylvania and West Virginia.

Turner's Pittsburgh office works with a diverse mix of public- and private-sector clients and has built or managed the construction of many leading commercial, residential, institutional, industrial, and healthcare facilities. We have cultivated excellent relationships with subcontractors, vendors, suppliers, and minority- and woman-owned business enterprises (M/WBEs) in the region and we offer in-house scheduling and mechanical, electrical, and plumbing (MEP) estimating expertise. We are able to achieve great value for our clients with the combination of our national purchasing power and our ability to engage smaller, local firms in the community.

To better serve our clients in the region, we combine resources, best practices, and the expertise of our personnel in our three regional offices: Philadelphia, Pittsburgh, and Somerset. Our joined forces enable us to provide the best possible service to clients. Our portfolio includes projects from less than one million dollars to several hundred million delivered to clients who value our input and collaboration as well as our experience balancing program, budget, time, and aesthetics on some of the most challenging and sophisticated projects in the region.

Turner's Pittsburgh office has experience on several green buildings and LEED certified projects and built the first Net-Zero/Living Building project in the region (and one of the first on the planet), Phipps Conservatory and Botanical Gardens Center for Sustainable Landscapes. We are committed to sustainable building practices and we integrate sustainable principles into all of our projects.

## 111 YEARS BUILDING IN PITTSBURGH 1976 OFFICE OPENS IN PITTSBURGH



525 William Penn Place



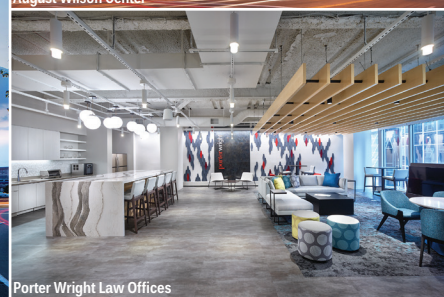
Mill 19



Carnegie Science Center



August Wilson Center



Porter Wright Law Offices

FOR MORE INFORMATION, PLEASE CONTACT:



**Dexter L. Hendricks, LEED AP BD+C**

Vice President, Community and Citizenship  
(732) 627-8314  
dhendricks@tcco.com



**Drew Kerr**

General Manager, Pittsburgh  
(412) 709-5324  
akerr@tcco.com



## Mascaro Construction Company, LP

Founded in 1988, Mascaro is among the largest contractors in the region in multiple markets:

- Buildings: education, government, healthcare, research, cultural, entertainment, office, commercial, sports, and multifamily/student housing
- Heavy/Industrial: bridge, highway, industrial, metals, oil and gas, water/wastewater, waterways, and power.



With an annual average of one million manhours, we do more than just manage projects. Our team has the ability to self-perform many aspects of a project: excavation and grading, pile driving, site utilities, structural erection, concrete, carpentry, drywall, acoustical, and the installation of miscellaneous specialties and equipment.

Our experience in construction management, general contracting, and design-build allows us to use the latest in technology to control quality, cost, and schedule. Our safety program has been recognized as one of the best, locally and nationally.

Consistently ranked among *Engineering News Record's* Top 400 Contractors and Top 100 Green Contractors, and a Pittsburgh Top Workplace for the past five years, we recognize that our work impacts the lives of our employees and communities. To that end, we strive to be a leader in workforce development to showcase the great opportunities and multiple career paths in construction. We invite you to visit [mascaroconstruction.com/careers/careers-in-construction](https://www.mascaroconstruction.com/careers/careers-in-construction) to learn more.



Mascaro Construction Company, LP  
1720 Metropolitan Street  
Pittsburgh, PA 15233  
Phone: 412.321.4901  
Fax: 412.321.4922  
[mcclp@mascaroconstruction.com](mailto:mcclp@mascaroconstruction.com)  
[www.mascaroconstruction.com](http://www.mascaroconstruction.com)