

Day 2 Surface Investigation

English Language Arts

Imagine that you live somewhere sandy, icy, or rocky. Write/draw how friction would affect how you moved on the surface. See if you can use the words **friction**, **surface** or **investigate** in your sentence.

"I live where it is _____."

Add a sentence of your own and illustrate if you'd like.

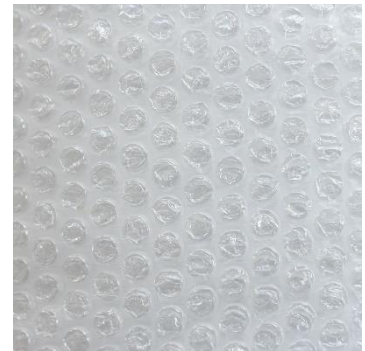
Day 2 Surface Investigation

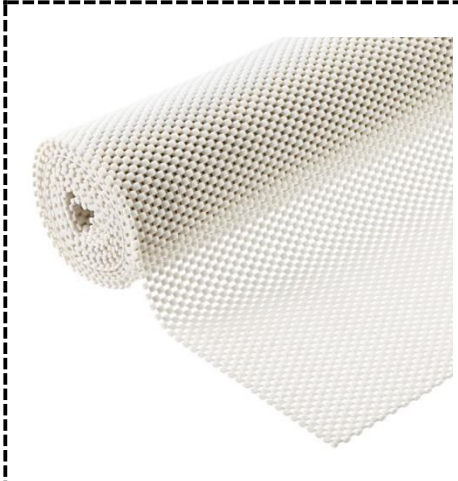
Math

Look at the predictions that you made for the Science activity.

Cut out the surface material cards and put them in order from the surface with the least amount of friction to the one that creates the most friction.

Keep these cards handy. You'll use them again on Day 6.





Day 2 Surface Investigation

Science

Take a look at the different surface materials you have. Make predictions about which ones will create the most friction and which ones will create the least amount of friction.

See if you can use some words to describe how the surfaces feel --- smooth, bumpy, sticky...

The _____ feels _____.

The _____ feels _____.

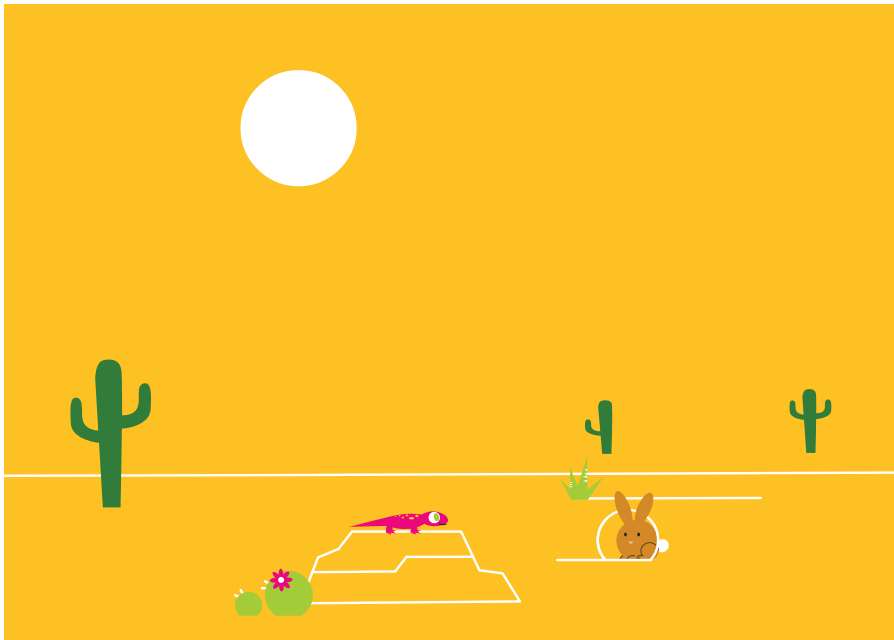
The _____ feels _____.

Day 2 Surface Investigation

Social Studies

Think about different places in the world that have different surfaces. For example, the desert is made of mostly sand. How would that affect the way you'd move across that surface? What if you lived somewhere cold or icy like the arctic? Draw what these places would look like

Desert



Arctic

